

What is the Fire Prevention Fee?

Assembly Bill x1 29 was signed into law on July 7, 2011 establishing an annual fee to pay for fire prevention services within the State Responsibility Area (SRA). The Fire Prevention Fee applies to owners of habitable structures on property located within the SRA.

What is the amount of the fee?

The fee amount is \$150 per habitable structure. However, owners of habitable structures within the boundaries of a local fire protection agency will receive a reduction of \$35 per habitable structure. The specific fee amount for your property can be found on the enclosed notice.

What is a “habitable structure?”

A “habitable structure” is a building that can be occupied for residential use.

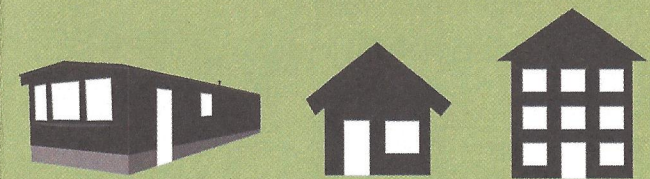
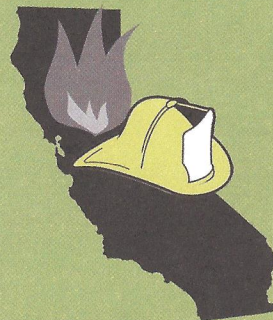
These include: single family homes, multi-dwelling structures, mobile and manufactured homes, condos and apartment buildings.

What is the State Responsibility Area?

The State Responsibility Area (SRA) is the area of the state where the State of California is financially responsible for the prevention and suppression of wildfires. SRA does not include lands within city boundaries or in federal ownership.

What does the fee pay for?

This fee will fund a variety of important fire prevention services within the SRA including brush clearance and activities to improve forest health so the forest can better withstand wildfire. Other activities funded by the fee include fire break construction, defensible space inspections, fire prevention engineering, emergency evacuation planning, fire prevention education, fire hazard severity mapping, fire related law enforcement and implementation of the State Fire Plan.



Habitable structures do NOT include buildings such as garages, barns, outdoor sanitation facilities and sheds.



Where can I get more information?

For more information about the Fire Prevention Fee please call:

1-888-310-6447

or visit our website, shown below, to review a list of Frequently Asked Questions (FAQs):

www.FirePreventionFee.org

*Information provided by the
California Department of Forestry
and Fire Protection*